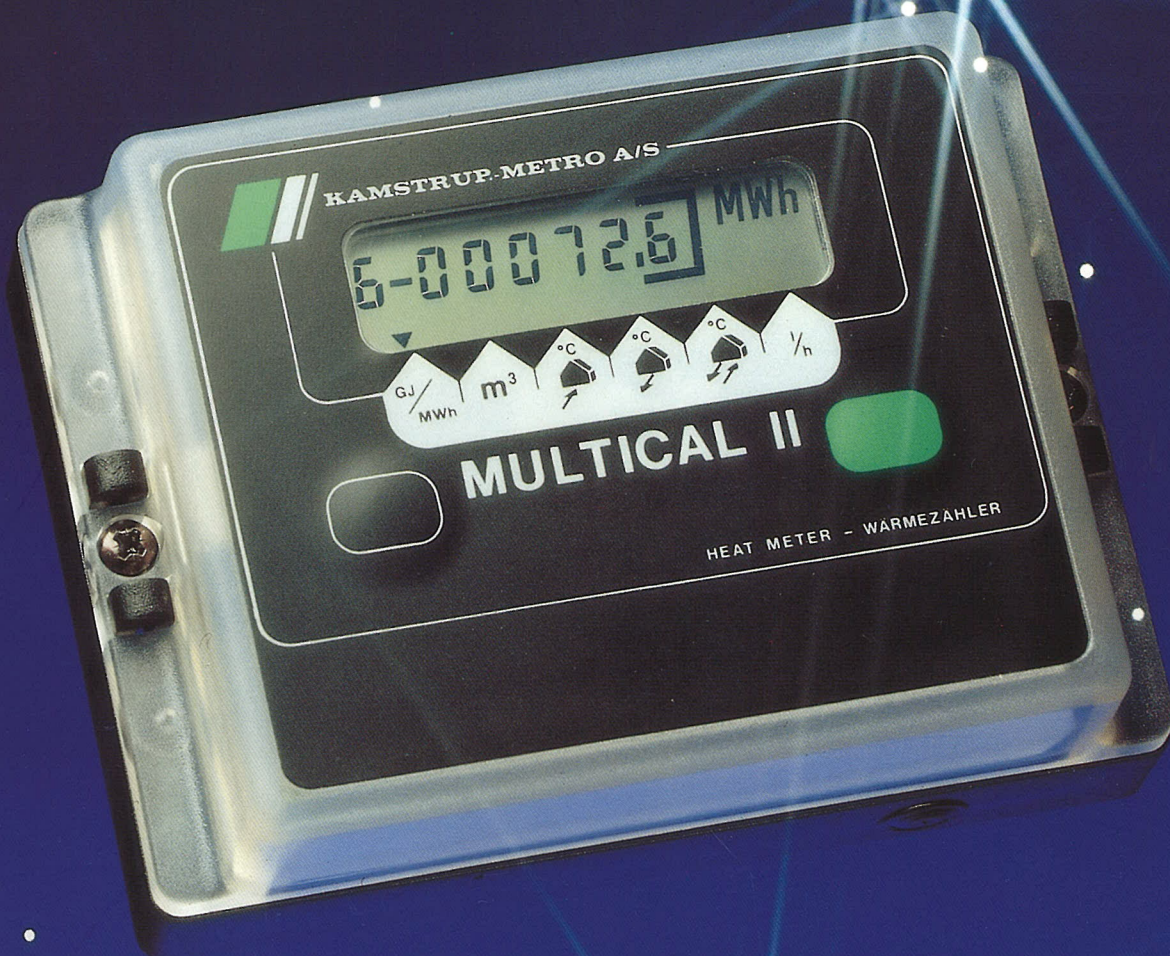


MULTICAL II



The New Generation of Heat Meters -

- prepared for the future
- flexible
- accurate
- reliable

008.845 MWh

Heat quantity in MWh or GJ

0167.15 m³

Water quantity

74.5

Forward temperature

29.0

Return temperature

45.55

Differential temperature

325

Instantaneous water flow

0

Information code

5400

Hour counter indication



MULTICAL II
can be connected to
all current types of
flow meters - including
future models.



MULTICAL II ensures the user
up-to-date information.....

MULTICAL II - a money-saver now and in future

MULTICAL II is an advanced energy meter - a money saver that also secures accurate energy measurement.

The idea of MULTICAL II is as simple as its operation: By placing temperature sensors in the consumer's forward and return pipes respectively, the cooling of the circulating district heating water can be registered.

A flow meter measures the amount of circulated district heating water.

Energy consumption is calculated from the cooling and the quantity of circulated water.

Energy measurement provides a precise and uniform basis for calculation of heat consumption - despite different forward temperatures - contrary to e.g. settlement based on circulated water quantities.

Experience shows, that as the consumer obtains a precise account of the consumption, the district heating station can obtain savings of min. 6-10% on energy settlement, due to reduced forward temperatures etc.

MULTICAL II gives the consumer a clear display of the total energy consumption.

Using only one button, he can produce information on circulated water quantities, actual forward and return temperatures, differential temperatures, number of operating hours since the latest change of battery as well as information codes with information on the working condition of the measuring system.

MULTICAL II is also available in versions, which e.g. limit the consumer to reading specially selected indications on the display.

However, the district heating station can still read and register all indications through the data output of the energy meter at any time.

Despite its advanced interior, MULTICAL II is quick and easy to operate. One button, one display and easy to read graphical symbols, make reading MULTICAL II as easy as reading any traditional flow meter.

At the same time, MULTICAL II includes many new possibilities.

The standard version of MULTICAL II includes an RS 232 data output for electronic data reading through a data acquisition system. E.g. a plug on the outside of the consumer's house.

A telephone modem can transmit data from the data output directly to the EDP-system at the district heating station. Surely, this is to be prepared for the future!

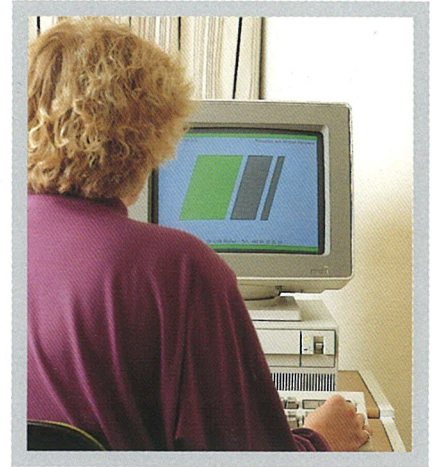
MULTICAL II retains its memory, even after a power failure: Through the data output of MULTICAL II, the meter reading device MULTITERM can read the current data from the energy meter.

Monthly data for MWh, m³ and information codes from the previous 11 months, can be read from the same data output. And always last month's total readings.

MULTICAL II can be used with all types of flow meters e.g. impeller water meters, magnetic inductive meters, ultrasonic meters and whatever the future may bring.

The newest technology has been used in the construction of MULTICAL II. This means sturdiness and a long life.

MULTICAL II is normally battery operated. If mains supply operation is required a power supply can of course be provided.



MULTICAL II is prepared for the future... e.g. for automatic data reading through the telenetwork to the EDP-system of the district heating station.



The plug for reading can be placed outside - a simple solution for everyone.



Naturally, MULTICAL II can also be placed on the wall, exactly where you find it most suitable.

Kamstrup-Metro A/S has many years' experience and knowhow within production of measuring systems for the industrial and district heating sector. The products of Kamstrup-Metro A/S are very flexible and have been developed to also fulfil future demands. Our specialities are measuring and control equipment for energy, flow, pressure, temperature, level and quantity.



KAMSTRUP-METRO A/S
Measuring and Control Equipment



Jacob Knudsenvej 12
DK-8230 Åsbyhøj
Tel.: +45 86 25 86 40
1221 Budapest
Jobbágy u. 5. Tel.: 226-15-85
Fax.: 226-15-86

Forgalmazó:
**COMPTECH Számítástechnikai
és Elektronikai kft.**