

Bluetooth optical head

DATA SHEET

- Optical interface according to EN62056
- Typical operating time 12 h continuous operation
- On/Off slide switch
- Status LEDs for battery state, Bluetooth link and data transmission
- Battery charging unit



Application

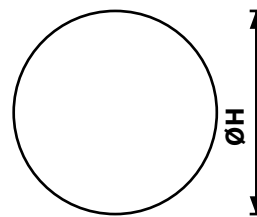
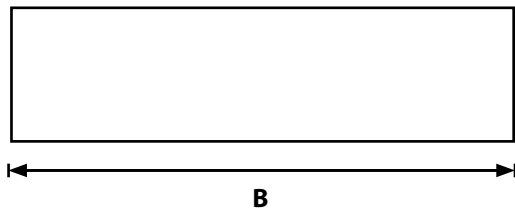
Bluetooth optical head is a device that enables the user to read logged data in meters and via a smartphone and READy App to illustrate the consumption in columns.



Electrical data

- Optical interface pursuant to EN62056
- Transfer speed of 300...38,400 baud
- Bluetooth 2.0 interface, class 2
- Range of up to 50 m
- Electricity supply via a lithium-manganese battery with 0.7 AH capacity (operating time of approx. 12 hours)
- Low battery indication
- Typical charging time: 2.5 hours

Mechanical data



Dimensions

Width	B	mm	70
Diameter	H	mm	32

- Weight: 65 g
- Magnetic retention force: ~ 15 N
- Infrared daylight filter
- Wrist strap eyelet
- Casing material: Delrin (POM), black
- Protection class: IP40

Suitcase



Ordering no: 6696 01xx