

RF Concentrator

Handles reading jobs and data of up to 680 energy meters/RF Routers/RF Concentrators

Is combinable with other network components

No configuration

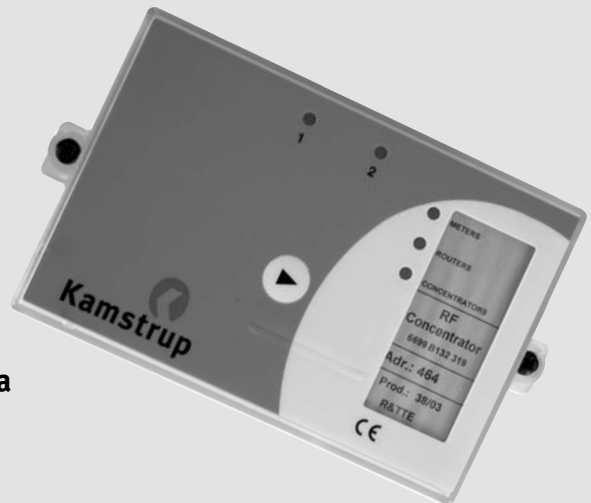
Prepared for serial communication - e.g. GSM

Status LEDs

Optional connection of external antenna

Optional update of software via radio network

Handles leak and bursting alarms



Application

RF Concentrator is the central network component used in Kamstrup radio networks requiring remote data reading of Kamstrup energy meters.

RF Concentrator sends inquiries to the individual energy meters and saves the read data.

If the RF Concentrator cannot communicate direct with the energy meters, an RF Router, which establishes radio connection for transmission of data between RF Concentrator and the individual energy meters, is added.

The data to be read from the radio network are specified in the general system software.

An RF Concentrator includes an external antenna in order to secure the best possible working radius between energy meters and network components.

The read energy meter data are transferred to the system software via GSM.

A standard RF Concentrator operates within a licence-free frequency band, but RF Concentrator is also available for other licence requiring frequencies.

The Kamstrup radio system is robust to other radio systems.



Kamstrup A/S
Industrivej 28, Stilling
DK-8660 Skanderborg
TEL: +45 89 93 10 00
FAX: +45 89 93 10 01
info@kamstrup.com
www.kamstrup.com

Network installation

To be able to use below as status indication on the radio network, you must install one or more Kamstrup energy meters and network units in the area.

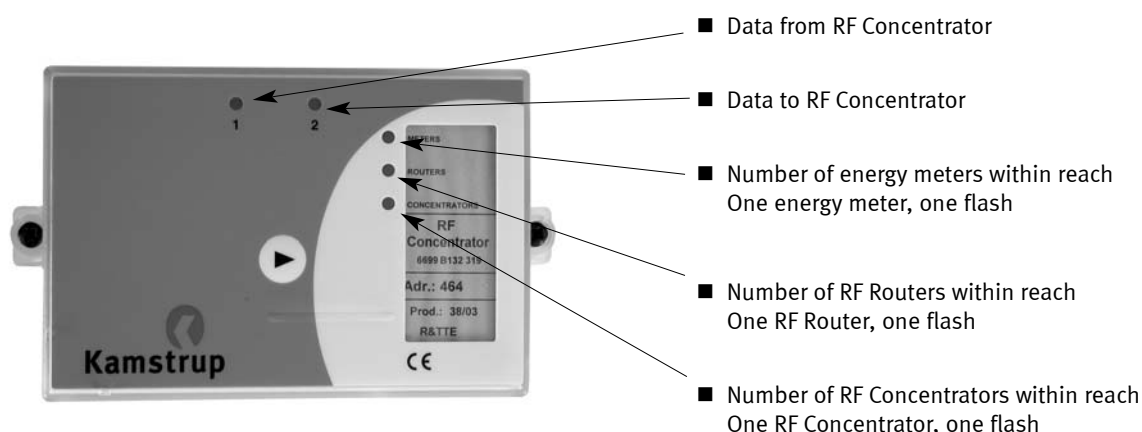
Installation test

Mount the RF Concentrator top after installation, and keep pressing the front key until the LED turns on in the the right side marked "Meters". Release the front key and the RF Concentrator starts creating its local list via radio communication. The LED's no. 1 and 2 flash on and off for max. 2 minutes.

When the LED's go out the local list has been created and can be read either directly on the RF Concentrator, see "RF Concentrator - Local list test" or via a hand-held terminal with radio flash 6699 161.

Local list test

Keep pressing the front key until the LED's turn on in the right side marked "Meters", "Routers" and "Concentrators". The local list is displayed when the LED's flash on and off, see next picture.



Technical data

Electrical data

Supply	230 VAC mains
Reach	Under normal installation conditions up to 350 m from mounting position With external antenna up to 1000 m
Frequency	Standard version for licence-free frequency band Alternatively for licence-requiring frequencies
Transmitting power	10 mW

Mechanical data

Ambient temperature	-40 - +60°C
Mounting	Indoors External antenna can be mounted outdoors
Protection class	IP54

Marking/Approvals

R&TTE directive	EN 300 220 - class 2 EN 301 489
CE-marking	

Order specification

Please contact Kamstrup A/S for further details on the construction of a radio network